

LUMILOOP

LASER-POWERED SENSOR SYSTEMS



Datasheet

————— LSFrame 1.0 —————

Product Integration Frame

Distributed by: Reliant EMC LLC, 3311 Lewis Ave, Signal Hill CA 90755, 408-916-5750, www.reliantemc.com

LSFrame is LUMILOOP's solution for straight-forward and reliable integration of one or more LUMILOOP products in a LAN-controlled, standard 19 inch form factor appliance.

LSFrame 1.0 can host:

- LSProbe Laser-Powered Electric-Field Probes,
- LSPM High-Speed Power Meters, and
- upcoming LUMILOOP products.

LSFrame 1.0 is equipped with a fully functional and freely accessible PC, available as standard and high performance configurations. Both featuring a 7-inch display, a 10-port USB 2.0 hub, a LAN and a USB device port.

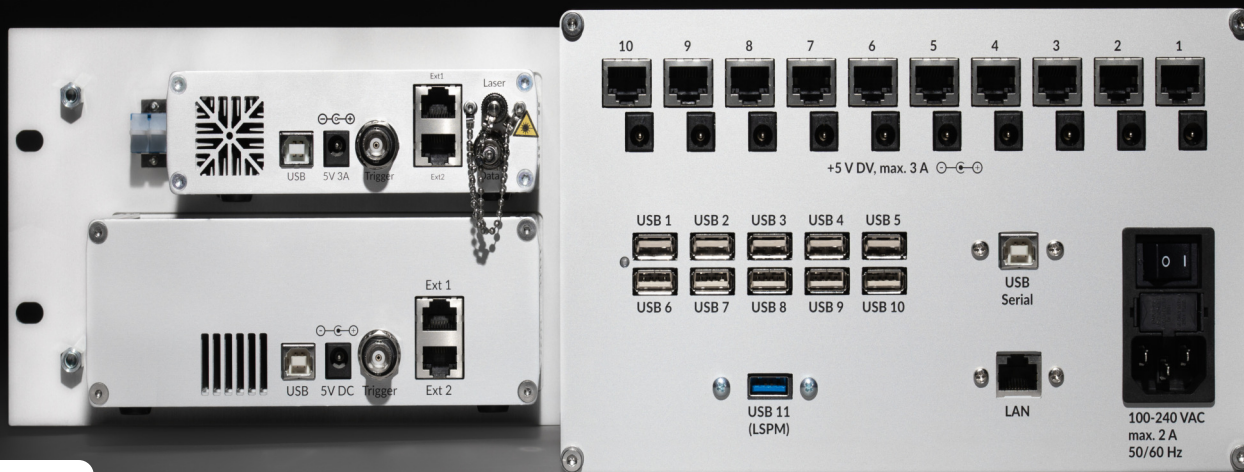
The built-in PC handles all low-level communication with LUMILOOP products and stores their calibration data in a single, easily accessible location. The integrated multi-touch display allows for stand-alone operation and monitoring of all measurement values.

LSFrame can be equipped with an LSProbe Field Probe and an LSPM Power Meter, supporting a wide range of accelerated standard measurements.

The system's functionality can be enhanced by connecting additional LSProbe Field Probes and LSPM Power Meters. LSFrame has been designed to record the measurement data of multiple synchronized Field Probes and Power Meters in real-time for several hours. Thus, it is very well suited for EMC testing, and particularly for the application in reverberation chambers.

Specifications

Interfaces	Gigabit-Ethernet, USB 2.0 device (USB-serial) USB 2.0 host (multiple)
Display	7 Inch, 1280 x 800 Pixel, Multi-Touch
Power Supply	100 V to 240 V (50 Hz to 60 Hz)
Built-in PC CPU RAM SSD USB ports Operating System	Standard / High Performance 2.3 GHz Celeron / 4.5 GHz i7 4 GB / 16 GB 128 GB / 1 TB 10 (hub) + 2 (discrete) Debian GNU / Linux pre-installed, alternative OS user-installable
Dimensions (W x D x H)	(480 x 300 x 133) mm
Weight	6 kg
Operating Temperature	0 °C to 40 °C
Certifications	CE



Distributed by:
Reliant EMC LLC
 3311 Lewis Ave.
 Signal Hill CA 90755
 408-916-5750
www.reliantemc.com

