

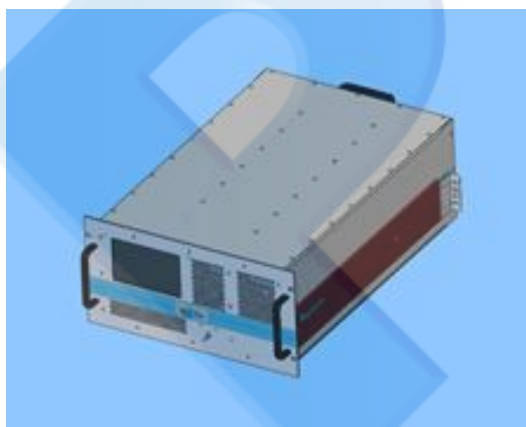


PTWA-7.5G18G-200

200W CW TWT Amplifier

Traveler Wave Tube (TWT) Power RF Amplifier

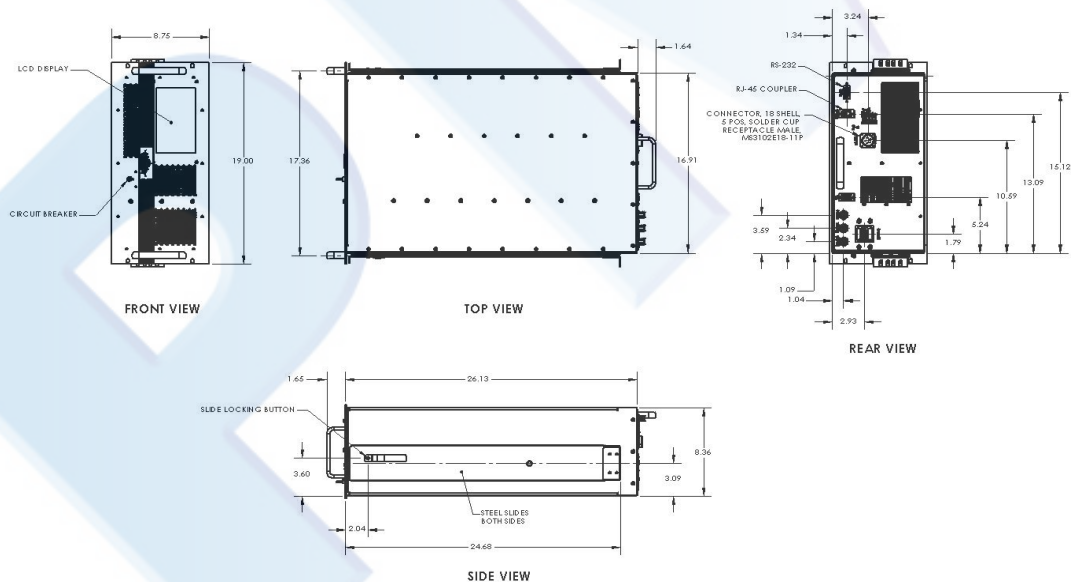
The PTWA-7.5G18G-200 is a TWT 200W (CW) Commercial RF Amplifier which covers frequency range from 7.5GHz to 18GHz. This amplifier can achieve high efficiency operation with proven reliability as is designed with the robust engineering and employment of the most advanced devices and components. The amplifier comes with one year warranty including the TWT.



Parameter	Specification
Electrical	
Frequency Range	7.5-18GHz
Output Power	200W CW min., 250W Typical
Internal Pre-Amp.	Input level: 0dBm or less
Gain @ rated power	55dB
Input / Output Impedance	50 ohms(VSWR 2.0:1)
RF Input / Output Connectors	RF Input Type N Female / RF Output WRD750
Modulation	AM / FM / Pulse
Noise Figure	≤ 35dB
Spurious	-50dBc
Harmonics (nom.)	7.5-12GHz:-2.5to-10dBc;
@Rated Power	12-18GHz:-10to-20dBc
Prime Power	220V AC +/-10%, 50/60 Hz, single or Three Phase
Mechanical	
Configuration	Rack Mount
	8.75"Hx19"Wx26.13"D
Cooling System	Air cooled ,self contained
Shock	MIL-STD-810C, method 516.2
Vibration	MIL-STD-810C, method 514.2
Environmental	
Temperature	0° to 45° C
Non-operating Temp	0° to 60°C
Humidity	95% without condensation
Altitude	10,000 feet

OPTIONS

001	VSWR Protection against any output mismatch; will operate without damage or oscillation against any magnitude and phase of source and load impedance.
002	Alternate Prime Power (specify at time of order).
003	RS232 & Ethernet Remote Control.
004	Forward RF Sample Port Type N Female -50dBc nominal on the Front or Rear Panel.
005	Reflected RF Sample Port Type N Female -50dBc nominal on the Front or Rear Panel.
006	RF Input/Output Connectors on the Front Panel (Specify front or rear at time of order).
007	Internal Systems Diagnostics.
008	Filament/Beam Elapsed Time Metering in hours.
009	RF Safety Interlock, type BNC Connector.
010	Forward/Reflected Power Indication simultaneously on Front Panel display.



Distributed by

Reliant EMC LLC

3311 Lewis Ave
Signal Hill, CA 90755
Tel.: (408) 916 5750

E-Mail: contact@reliantemc.com
Web: www.reliantemc.com