



Inductive Voltage Regulator-APH Series

100kVA~1500kVA

Professional Power Solution Provider

APH-D

3

Input Phase

3

3

Output Phase

3

0500

Capacity

500kVA

Inductive Voltage Regulator-APH Series 100-400kVA

Model		APH- 330100	APH- 330125	APH- 330150	APH- 330200	APH- 330250	APH- 330300	APH- 330350	APH- 330400
Capacity		100kVA	125kVA	150kVA	200kVA	250kVA	300kVA	350kVA	400kVA
Circuit Type		Inductive Voltage Regulator							
Input	Phase	3Ø3W / 3Ø4W							
	Voltage Range	Voltage: -13%~+17% (option:-22%~+30%)							
	Frequency	47Hz ~ 63Hz							
Output	Phase	3Ø3W / 3Ø4W							
	Voltage	200V/208V/220V, 380V/400V/415V							
	Accuracy	±2% (±1%~±5%A adjustable)							
	Voltage Modulation	≤4 V/S							
	Overload	125%-40min, 150%-20min, 175%-10min, 200%-5min							
	Total Harmonic Distortion	≤1% (Compared with input)							
	VA Efficiency	≥97%							
Measurement		Input Line Voltage and Frequency; Output Line Voltage, Phase Voltage, Line Current, and Frequency; VA, W, P.F.; Load Rate; Internal Temperature							
Protection	Loss Phase, Phase Reversed Protection								
	Output Over Voltage & Under Voltage Protection								
	Output Overload Protection								
	Over Temperature & Over Current								
	Redundant Circuit Control								
	Event History Inside Memory for up to 200 events								
User Interface	Operation	LCD and Push Button with Light							
	Alarm	Alarm I. Audio Alarm II. Activate							
	Communication	RS-485							
	Software	Remote Control and Monitor							
Environment	Working Temperature	-5℃ ~ 40℃							
	Storage Temperature	-30℃ ~ 50℃							
	Humidity	<95%(Non-condensing)							
	Altitude	≤1000meter							
Cooling System		Fan cooling							
Others	Noise	≤50dB	≤55dB						
	Optional	Auto transformer							
		Full time lightning and surge protection							
		Output on & off electromagnetic contactor							

- ① Other Input Ranges are on request.
- ② Custom-made specifications are on request.
- ③ All specifications are subject to change without notice.



Inductive Voltage Regulator-APH Series 500-1500kVA

Model		APH- 330500	APH- 330600	APH- 330800	APH- 331000	APH- 331250	APH- 331500
Capacity		500kVA	600kVA	800kVA	1000kVA	1250kVA	1500kVA
Circuit Type		Inductive Voltage Regulator					
INPUT	Phase	3Ø 3W / 3Ø 4W					
	Voltage Range	Voltage: -13%~+17% (option:-22%~+30%)					
	Frequency	47Hz ~ 63Hz					
OUTPUT	Phase	3Ø 3W / 3Ø 4W					
	Voltage	200V/208V/220V, 380V/400V/415V					
	Accuracy	±2% (±1%~±5%Adjustable)					
	Voltage Modulation	≤4V/S					
	Overload	125%-40min, 150%-20min, 175%-10min, 200%-5min					
	Total Harmonic Distortion	≤1% (Compared with input)					
	VA Efficiency	≥97%					
Measurement		Input Line Voltage and Frequency; Output Line Voltage, Phase Voltage, Line Current, and Frequency; VA, W, P.F.; Load Rate; Internal Temperature					
Protection		Loss Phase, Phase Reversed Protection					
		Output Over Voltage & Under Voltage Protection					
		Output Overload Protection					
		Over Temperature & Over Current					
		Redundant Circuit Control					
		Event History Inside Memory for up to 200 events					
User Interface	Operation	LCD and Push Button with Light					
	Alarm	Alarm I. Audio Alarm II. Activate					
	Communication	RS-485					
	Software	Remote Control and Monitor					
Environment	Working Temperature	-5℃ ~40℃					
	Storage Temperature	-30℃ ~50℃					
	Humidity	<95%(Non-condensing)					
	Altitude	≤1000meter					
Cooling System		Fan cooling					
Others	Noise	≤60dB					
	Optional	Auto transformer					
		Full time lightning and surge protection					

- ❶ Other Input Ranges are on request.
- ❷ Custom-made specifications are on request.
- ❸ All specifications are subject to change without notice.



Operating Panel Display at Different Working Status



When the "Green" light on the operating panel is on, it means the regulator is auto-running well and the input/output voltages are normal. When the "Green" light flashes, it means the device is running well by manual and input/output voltages are normal. When the "Red" light flashes, it means the regulator is abnormal. Please press "C" button and the abnormal message will be presented.

APH Series Dimension & Weight

Capacity kVA	Machine Dimension			Packing Dimension			Weight
	Width(mm)	Depth(mm)	Height(mm)	Width(mm)	Depth(mm)	Height(mm)	Net (Kg)
100	600	1160	1510	780	1370	1800	594
125	600	1160	1510	780	1370	1800	644
150	600	1160	1510	780	1370	1800	668
200	600	1160	1825	780	1370	2150	744
250	600	1160	1825	780	1370	2150	830
300	600	1160	1825	780	1370	2150	926
350	600	1160	1825	780	1370	2150	976
400	600	1160	1825	780	1370	2150	1046
500	600	1160	1825	780	1370	2150	1090
600	800	1400	2020	980	1670	2300	1292
800	800	1400	2020	980	1670	2300	1412
1000	800	1400	2020	980	1670	2300	1599
1250	800	1400	2020	980	1670	2300	1760
1500	800	1400	2020	980	1670	2300	1988

Introduction of Inductive Voltage Regulator-APH Series

Currently, as the economy grows very fast, the electricity consuming raises up and the shortage of power supply happens much often. The fuel crisis, energy crisis, and environment pollution come along with it. Human societies are facing more and more electric problems and difficulties. As for an enterprise, power problems always come as the first concern.

In case your device is under the conditions or impacts of over power consuming, large equipments, or electric power problems such as voltage fluctuation/spike/surge/noise, it will result in device abnormality, short device lifetime, parts damage, or even function failure.

Our Inductive Voltage Regulator - APH Series is designed for solving these problems, and offering the stable, safe, and clean power. With the innovative technology, creative design, and continuous development and research, we offer you the latest generation of Inductive Voltage Regulator - APH Series, which is very popular among our world wide customers.

Electric Features

STRONG, DURABLE & HIGH RELIABILITY

No Contact Point. Capable to sustain spike, surge or impulse lash coming from Non-linear load.
Low Faulty Rate. Long Equipment Life.

PROTECTION

Redundant Circuit Control.
Event History Inside Memory for up to 200 events.
Loss Phase, Phase Reversed Protection.
Output Over Voltage & Under Voltage Protection.
Output Overload Protection.

HIGH OVERLOAD CAPABILITY

100% continuous load; 200% transient current to 5 minutes.
Maximum tolerable 500% transient start current.

NEW USER INTERFACE

LCD; Blue Backlight; White Words.
RS-485 communication port.

Push buttons with light convenient to operate under dark.

Remote signal, measurement, and control functions to monitor and control your equipments.



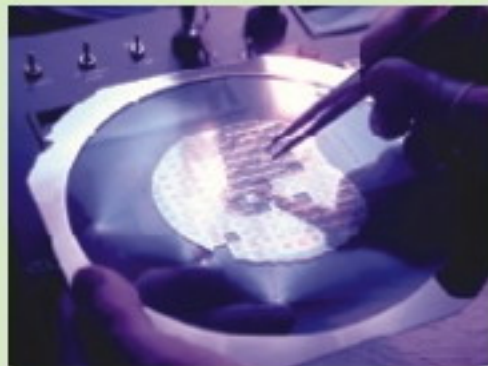
1500kVA MAX. CAPACITY PER UNIT; HIGH VOLTAGE POWER SOURCE

Inductive type Voltage Regulator is the unique capable to fabricate 1500kVA max per one unit.

APPLICATION & SERVICE

AC Power Corp. offers products widely applied in multi-professional fields and provides the best power solutions to customers. Our mission is to satisfy customers' demand by considering the whole conditions including power environment, loading allocation, module solution alternative, thoughtful design, efficient manufacturing, and complete maintenance.

Application



Semiconductor



Office IT Equipment



Control ROOM



SMT Equipment



Electronic & Medical Equipment



Production Line



Satellite & Communication Equipment



Airport Control Tower Facilities



Bioscience

Communication Systems

- ▲ TV Station
- ▲ ADSL
- ▲ Coaxial Cable TV System & Components
- ▲ Radio Communication Equipment & Systems
- ▲ Satellite & Communication Equipment
- ▲ Fiber-Optics System
- ▲ Lan Server

IT Field

- ▲ Home Electrical Appliances
- ▲ Information Appliances
- ▲ Office IT Equipment
- ▲ POS System

Computer & Computer Peripherals

- ▲ Electronic Data Processing (EDP) Center
- ▲ Server / Data Storage System
- ▲ Industrial PC

General Lab

- ▲ Program Control System
- ▲ Electronic Test Equipment

F / A

- ▲ Production Line
- ▲ IC (Integrated Circuit) Field
- ▲ CNC Machine
- ▲ SMT Equipment
- ▲ Auto-Insertion Equipment
- ▲ PCB Assembly Equipment
- ▲ Semiconductor (BGA, CSP, Flip Chip, LCD)
- ▲ Production Process and Control Equipment
- ▲ Printing Industry

Medical & Military

- ▲ Electronic & Medical equipment
- ▲ Medical Monitoring System
- ▲ Airport X-ray Scanning equipment
- ▲ Airport Facilities
- ▲ Airport Control Tower Facilities

Others

- ▲ Bioscience
- ▲ Gas Station
- ▲ Opto-Electronic Industry

The Power You Can Trust!

Distributed by:
Reliant EMC LLC

3311 Lewis Ave, Signal Hill CA 90755,
408-916-5750, www.reliantemc.com